

## Recycling Quick Reference...

If you don't find it in  
the Recycling Handbook,  
visit  
[www.Recycling.co.lake.ca.us](http://www.Recycling.co.lake.ca.us)  
or call 263-1980



	Page
<b>Appliances</b>	5
<b>Batteries</b>	6
<b>Computers</b>	8
<b>Fluorescent Lights</b>	10
<b>Mattresses</b>	12
<b>Motor Oil</b>	13
<b>Poisons</b>	14
<b>Propane Tanks</b>	14
<b>Scrap Metal</b>	12
<b>Televisions</b>	16
<b>Tires</b>	16

# Lake County

## Public Services Department

### Toxic.Free.Home.



## Help Prevent Illegal Dumping!

Per Lake County Code, Section 9-5.2:

### It is Illegal...

to collect and dispose of garbage for someone else unless:

- Permission has been granted by contract with the County of Lake to collect and dispose of garbage for a fee.
- Someone is hauling garbage without compensation as a friendly or neighborly gesture.
- A person or firm has been hired to cut, trim, mow, construct, demolish, or clean up property and the hauling is done as part of that contract.

**Violations are punishable by a fine or 30 days in jail**

Paid for in part by grants from CalRecycle  
Events, dates, locations, and other specific details are subject to change  
without notice. Please call the Lake County Recycling Hot Line  
for the most current information at 263-1980  
Printed Fall 2010 on 30% recycled paper.

# Reduce, Reuse, & Recycle Handbook

Published by the  
**Lake County**

**Public Services Department**

333 Second Street, Lakeport, CA 95453 • 707-263-1980

[www.recycling.co.lake.ca.us](http://www.recycling.co.lake.ca.us)

[recycling-makes-cents@co.lake.ca.us](mailto:recycling-makes-cents@co.lake.ca.us)

**Fall 2010**



## Here are Nine Ways to Save...

**Time, Money, and  
the Environment**

(while avoiding a **Non-Recycling  
Surcharge!** See inside back cover  
for more information)

	Page
1. Convenient curbside service	1
2. Recycling savings	2
3. Drop-off & buy-back centers	3
4. Reduce, reuse, & buy recycled	4
5. Index of materials	5 - 18
6. Greenwaste & wood waste	18
7. Hazardous waste	23
8. Used oil & oil filters	24
9. Tires	17
10. Disposal facilities	Inside back cover

To find out about new programs and Amnesty Events,  
visit [www.Recycling.co.lake.ca.us](http://www.Recycling.co.lake.ca.us)  
or call 263-1980



### Common Recycling Mistakes:

- Leaving caps and lids on recyclable containers
- Putting batteries and CFLs (compact fluorescent lights) in the trash instead of taking to HazMobile
- Putting brooms and mops in recycling bin
- Carpeting is not recyclable
- Hoses are not recyclable
- Placing painted or treated wood in greenwaste bins

# Disposal Facilities

### Eastlake Landfill

16015 Davis St., Clearlake  
994-5888

### Hours of Operation

Monday - Saturday  
7:30 a.m. to 3:00 p.m.  
Sunday  
8:00 a.m. to 3:30 p.m.  
(Except County Holidays)

### Lake County Waste Solutions

230 Soda Bay Rd., Lakeport  
234-6400 or 1-888-718-4888

### Hours of Operation

Monday - Saturday  
7:30 a.m. to 3:00 p.m.  
Open until 4:30 p.m.  
April - September  
(Except Major Holidays)

## Fee Schedule (subject to change)

### Eastlake Landfill

Minimum Fee	\$2.00
30 gal. can/bag	\$1.00
Loose Loads:	
Up to 5 cu yd	\$5.25
5 or more cu yd	\$37.00/ton

### Lake County Waste Solutions

Minimum Fee	\$5.00
30 gal. can/bag	\$1.50
Loose Loads:	
Up to 5 cu yd	\$6.50/ cu yd
5 or more cu yd	\$48/ton

## Surcharges

**Non-Recycling** to save landfill space: Fees may be doubled on loads containing more than 25% recyclable materials; \$15 minimum.  
**Unsecured Load** to reduce litter: \$10 for pickup trucks and trailers; \$100 for commercial vehicles over 25,000 gvw.

## Items Prohibited in Your Trash

	<i>Where accepted</i>	Page
Appliances	Recycling/Dropoff Center	3
Batteries, Auto	Recycling/Dropoff Center	6
Batteries, Household	HazMobile	23
Computers & TVs	Recycling/Dropoff Center	3
Explosives & ammunition	Sheriff's Office	5
Flourescent & CFLs	HazMobile	23
Medical Waste	Medwaste	12
Tires	Recycling/Dropoff Center	16

# Drop-Off Sites to Recycle Used Oil & Used Oil Filters

Did you know...

- Used oil doesn't wear out; it just gets dirty.
- Mercedes Benz uses rerefined motor oil in all of their new cars.
- It is illegal to dispose of motor oil on the ground, in sewers, or in the trash.
- It is illegal to spray motor oil on roads for dust control.
- Used oil contains high levels of toxic heavy metals and halogens
- One gallon of oil can contaminate up to one million gallons of water.



## Clearlake

Kragen Auto Parts  
14993 Lakeshore Dr.  
995-9295

\* South Lake Recycling  
16015 Davis Rd.  
995-8614

## Lakeport

\* Lake County Waste Solutions  
230 Soda Bay Rd.  
263-7682

Kragen Auto Parts  
2011 S. Main St.  
263-9633

## Lower Lake

Jonas Energy Solutions  
16445 Main St.  
994-6535

*\*also accepts anti-freeze,  
see page 5*

## Lucerne

Northshore Fire Protection District  
6257 7th Ave.  
274-3100

## Middletown

South Lake Fire Dept.  
21095 Hwy 175  
987-3089

## Marine Oil

\*Bayshore Marine Service  
7723 Hwy 29, Kelseyville  
279-1094

## \*Hillside Honda

460 S. Main St., Lakeport  
263-9000

## Agricultural Oil

Westgate Petroleum  
3740 Highland Springs Rd.,  
Lakeport  
263-6512

*Curbside recycling, trash, and green waste service is available throughout Lake County!*

- No separating required! All recyclables go in one cart.
- Easy to maneuver roller carts provided by the hauler.
- Rates as low as \$12/month based on the size of the refuse cart: 20-gallon, 30-gallon, 60-gallon, and 90-gallon carts available.
- 90-gallon yard waste (greenwaste) cart and 90-gallon recycling cart at no additional charge with residential service.

*The more you recycle, the more you save!*

## Who's Your Hauler?



Lake County Waste Solutions Clearlake Waste Solutions  
234-6400  
1-888-718-4888

Clearlake, Clearlake Oaks,  
Glenhaven, Kelseyville, Lucerne,  
Nice, North Lakeport, Upper Lake



**Lakeport Disposal** Inc.  
263-6080  
Lakeport



Recycling Center Business Office  
994-8614 994-8613

Cobb, Hidden Valley Lakes, Lower Lake, Middletown, and Clearlake Riverias east of Soda Bay Rd.

**Remember** to place your carts at the curb the night before collection day, about 3 feet apart, with arrows on lids pointing towards the street, and avoid placing bins under overhead power lines and low tree branches. Be a good neighbor! Bring them back off the street by nightfall that day.

## The more you recycle...



### Attention Business, Mobile Home Park, and Apartment Owners

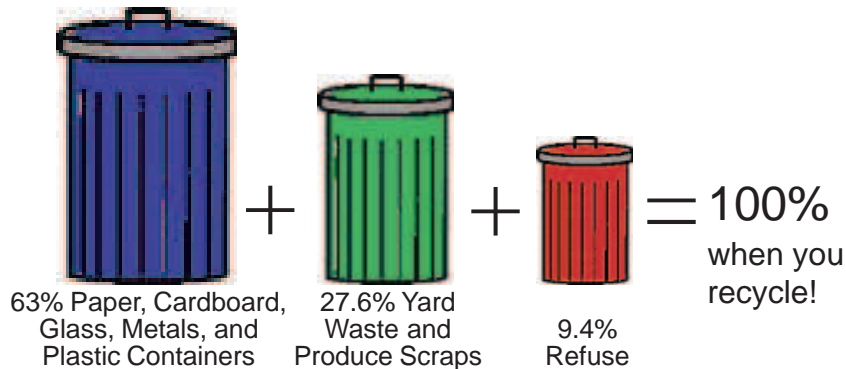
in the unincorporated areas of Lake County! Commercial customers are entitled to a recycling container equal to the size of their refuse container. If you're paying for a

weekly collection of a 4-yard bin you could START RECYCLING, avoid a non-recycling surcharge, and pay for only the 2-yard bin.

## The more you save!!

Throughout Lake County, fees are based on the amount of refuse you dispose. So whether you self-haul or have collection service, the more you recycle, the more you will save.

If you'd like to establish a recycling program in your business, mobile home park, or apartment complex, call 263-1980 to schedule a free "waste audit" and start saving!



## Hazardous Waste/HazMobile

### Accepted Materials

acid	metal cleaner
adhesives	nail polish
antifreeze	oil-based paint
bleach	paint
butane	paint thinner
cosmetics	polishes
dyes	prescriptions
fluorescent tube	rat poison
fungicide	solvents
gasoline	stripper
herbicides	oil filters
latex paint	wood cleaner
lighter fluid	
5 gallons or smaller propane tanks	



### Not Accepted at HazMobile

propane tanks over 5 gallons  
computers  
copiers  
explosives  
medical waste  
printers  
radioactive material  
televisions  
*See Materials Index for disposal options*

### Toxic.Free.Home.



### What is HazMobile?

The Lake County Public Services Department provides a mobile Household Hazardous Waste collection service for Lake County residents. Check the schedule of Household Hazardous Waste (HazMobile) events at:

[www.recycling.co.lake.ca.us](http://www.recycling.co.lake.ca.us)

All events Friday & Saturday  
9:00 a.m. to 1:00 p.m.  
15 gal. maximum per vehicle.

Businesses: Call 468-9786  
for an appointment and fee schedule.

### Why Proper Disposal Matters...

- Groundwater, wells, streams, and Clear Lake can be contaminated if hazardous waste is poured on the ground or in storm drains.
- Hazardous waste in your home may cause injuries to fire-fighters responding to a fire.
- Refuse and landfill workers can be injured by chemical splashes or poisonous fumes.

# Alternatives to Burning

## 3. Compost

Composting keeps organic materials out of our landfills, making additional space available for trash, and turns organic materials into a useful product. The composting process decomposes organic wastes into a soil amendment that will improve soil structure, texture, and aeration, as well as increasing the soil's water-holding capacity. Compost is available for sale at Quackenbush Mountain Resource Recovery and Compost Facility (behind South Lake Refuse and Recycling, which takes small loads) or Lake County Waste Solutions (page 21).



Recipe for success: In a wire, wood, or plastic bin (with air holes), place leaves, yard trimming, vegetable scraps, coffee grounds, cold wood ash, etc. Alternate green and brown layers, keeping food scraps well covered in the pile. Keep pile moist, but not soggy. It's done when it's dark and crumbly.

### Things to Compost:

- leaves
- grass clippings
- prunings
- flowers
- wood ash
- sawdust
- vegetable trimmings
- coffee grounds



### Things Not to Compost:

- bones
- dog & cat feces
- unchopped wood
- plastics
- meat, fish, poultry
- diseased plants
- animal scraps
- dairy products

# Recycling Drop-off & Buy-Back

Key:	South Lake Recycling*	Lake County Waste Solutions*
N/C	No Charge	
F	Fee charged	
	Call for information	
\$\$	Redemption paid	
*	See inside back cover for hours	
	<b>994-8614</b> 16015 Davis St., Clearlake	<b>234-6400</b> <b>1-888-718-4888</b> 230 Soda Bay Rd., Lakeport
<b>Appliances</b>	F	F
<b>Batteries, Automotive</b>	N/C	N/C
<b>Cardboard</b>	N/C	N/C
<b>Cathode Ray Tubes, Electronics</b>	N/C	N/C
<b>Glass Containers</b>	N/C	N/C
<b>Greenwaste</b>	F	F
<b>Mixed Paper</b>	N/C	N/C
<b>Plastic Containers</b>	N/C	N/C
<b>Scrap Non-Ferrous Metal</b>	\$\$	\$\$
<b>Styrofoam</b>	N/C	N/C
<b>Tires</b>	F	F
<b>Used Oil</b>	N/C	N/C
<b>Beverage Containers</b>	\$\$	\$\$

**Clearlake**  
South Lake Recycling  
16015 Davis Rd.

*Foods Etc.*  
15290 Lakeshore Dr.

*Ray's Food Place*  
15950 Dam Rd.

**Middletown**  
*Hardester's*  
21088 Calistoga St.

**Clearlake Oaks**  
*Red & White Market*  
(Wednesday only)  
12580 Acorn St.

### Beverage Container Buy-Back Centers

**Kelseyville**  
*Riveria Foods*  
9730 Soda Bay Rd.



**Lakeport**  
*Lake County Waste Solutions*  
230 Soda Bay Rd.

*Grocery Outlet*  
1115 S. Main St.

*Willow Tree Plaza*  
11th St. - Behind East end

**Lucerne**  
*Lakeview Market*  
(Thursday only)  
6084 E Highway 20

**Nice**  
*Robinson Rancheria*  
1545 E Highway 20

## Reduce Your Waste...



- Buy in bulk and avoid buying individually wrapped items when possible.
- Choose products with the least amount of packaging.
- Bring your own shopping bag.

## Reuse & Reusable

- Save boxes, bags, and gift wrap for the future.
- Take reusable items to a thrift store:

Hospice Services	14290 Lakeshore	Clearlake
Hospice Services	1701 S. Main St.	Lakeport
People Services	395 N. Main St.	Lakeport
St. Vincent dePaul	16125 Orchard	Lower Lake
Methodist Church	21216 Washington	Middletown



Listen to: the "Old Okie Trading Show," 11:00 am to 1:00pm, Saturdays on KPFZ, Lake County Community Radio, 88.1 or "The Trading Post," 10:00 am to 11:00 am, Fridays, on KXBX AM1270.

www.LakeCoNews.com offers free classifieds, and the Lake County Record-Bee offers classified ads for free items at no charge.

Join the Freecycle group at:  
<http://groups.freecycle.org/lakeport-kelseyville-freecycle>

Donate building materials to Habitat for Humanity. Call 994-1100 or visit [www.local.habitat.org/hfhlakeca](http://www.local.habitat.org/hfhlakeca)

For more opportunities, call the recycling hotline at 263-1980, or email [recycling-makes-cents@co.lake.ca.us](mailto:recycling-makes-cents@co.lake.ca.us)

## Buy Recycled



- Look for recycled content information on products.
- Purchase products in plastic containers numbered 1 - 7 as they can be placed in your curbside bin.
- Shop at antique, consignment, and thrift shops.

**Lake  
MAX**

**California Materials Exchange  
Free Classified ReUse Ads  
[www.CalMAX.org/LakeMAX](http://www.CalMAX.org/LakeMAX)  
1-877-520-9703**

# Alternatives to Burning Yard & Wood Waste

## I. Curbside Service

There is no additional charge for the 90-gallon greenwaste or 90-gallon recycling carts when you subscribe for residential curbside service. Monthly fees (as low as \$12) are based on the size of your refuse container. For more information, call your hauler. Call the Lake Quality Air Management District for burn regulations.



234-6400  
1-888-718-4888

**Lakeport  
Disposal** Inc

263-6080



**Note:** No poison oak, berry vines, cactus, or palm fronds.

## I. Reduced Self Haul Rates

Call for information about fees for clean wood (not treated or painted) and greenwaste. Deliver to:

**Lake County  
Waste  
Solutions**  
234-6400  
1-888-718-4888  
Monday - Saturday  
7:30 a.m. to 3:00 p.m.  
Open until 4:30 p.m.  
April - September  
230 Soda Bay Rd.,  
Lakeport

**South Lake  
Refuse &  
Recycling**  
994-8614  
Daily 7:30 a.m. to  
3:00 p.m.  
16015 Davis St.,  
Clearlake  
(At entrance to  
Eastlake Landfill)

**Quackenbush  
Mtn.  
Resource  
Recovery and  
Compost  
Facility**  
Monday - Saturday  
7:30 a.m. to 3:00 p.m.  
(Behind Eastlake  
Landfill) **21**

# Do Your Spring Cleaning Any Time of the Year! Schedule a Bulky Item Collection

Available in the unincorporated areas



994-8613

of Lake County  
for residential  
customers of:

And



234-6400 or  
1-888-718-4888

Call your individual hauler for an appointment. Residents of Lakeport and Clearlake call your hauler for availability. There are NO transportation fees! Maximum of two items per year. Extra items can be scheduled for additional fee.

## No Fee for these items:

BBQ Grill  
Bed Frame  
Bicycle  
Box Spring  
Carpet & Padding (*tie in bundles no larger than 4' by 2'*)  
Computer  
Couch  
Furniture  
Household Electronics  
Large Toys  
Lawn Mower (*drain all fluids*)  
Mattress  
Microwave Oven  
Printer  
Plumbing Fixture  
Recliner  
Sporting Equipment  
Television  
Vacuum Cleaner  
Wheelbarrow  
Window

## Appliances:

\$10 Each, handling fee will be added to your garbage bill.

## These items CANNOT be accepted:

Concrete	Trash
Dirt	Tree Stumps
Paint	Yard Debris
Piano	Hazardous Waste

This program is NOT for items that can:

- fit in your trash can,
- be recycled, or
- be donated to a thrift store.



20

# Alphabetical Index of Materials

- A -

## AEROSOL CANS



If container is empty and contents were nontoxic, recycle curbside in your blue cart or drop-off at recycling center (see page 3). If contents *were toxic*, and container is empty, dispose of in trash. If container is not empty, and contents are toxic, take to HazMobile event for free disposal (see page 23).

## ALUMINUM CANS

Recycle curbside in your blue cart or bring to a Buy-Back Center to receive money back. (see page 3)

## AMMUNITION

Can be taken to the Lake County Sheriff's Office with an appointment, call 262-4200 to schedule an appointment.

## ANIMALS, DEAD

On public roads, call local hauler for pick-up (see page 1). If on your property, take to Animal Care & Control, 4949 Helbush Lakeport, 263-0278 or call your veterinarian.

## ANTIFREEZE

Several used oil collection sites also accept antifreeze, see page 24 or take to Hazmobile event (see page 23).

## APPLIANCES

Call your hauler to schedule a "Bulky Item Pick-Up" for large appliances (see page 20) or drop-off at recycling center (see page 3). Proof of residency required.

**Large** - \$10 fee for major appliances includes refrigerators, stoves, freezers, air conditioners, etc.

**Small** - Free



## ASBESTOS (and presumed asbestos-containing materials)

Call the recycling hotline at 263-1980 for information.

## ASPHALT

See CONSTRUCTION & DEMOLITION

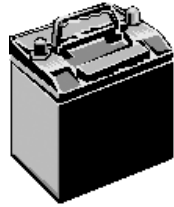
## ASPHALT SHINGLES

See CONSTRUCTION & DEMOLITION

## AUTOMOBILE BATTERIES

See Batteries, Automobile

- B -



## BATTERIES

All batteries are considered hazardous materials and cannot be thrown into the garbage. Drop-off free at recycling center (see page 3) or take to HazMobile event for free disposal (see page 23).

**Automotive Batteries** - Drop-off at recycling center or at most auto parts stores.

**Household Batteries** - Drop-off at recycling centers or at a HazMobile event (see page 23).

## BICYCLES

If they are re-usable, donate to a thrift store or post on Freecycle (see page 4).

**Frames** - Recyclable as scrap metal at recycling center (see page 3).

**Tires** - \$1 each at recycling center (see page 3).

**Seat** - Can be disposed of as trash.

## BOOKS



If they are re-usable, donate to schools, library, county jail, (please call to schedule donation) or any thrift store. Contact used bookstores for possible buy-back or store credit. Paperback and hardcover books are recyclable curbside in your blue cart or drop off free at recycling center. Covers on hardcover books must be removed and disposed

of with trash (see page 3).

## BUILDING MATERIALS

See CONSTRUCTION & DEMOLITION

6

## Get Rid of Your Spare Tire! Tire Amnesty Program

Call the Recycling Hotline at 263-1980  
for information and amnesty dates.

Residents of Lake County may dispose of up to 9 passenger tires, up to R19.5, during advertised Tire Amnesty Events at no charge.

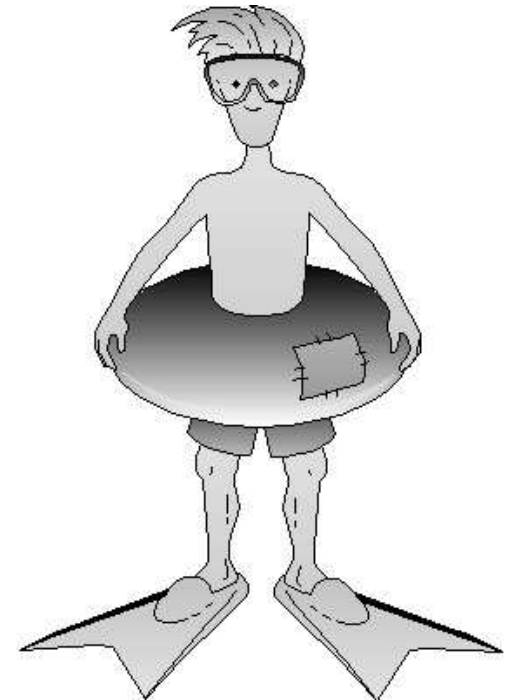
Discounted fees apply for passenger tires over R19.5. The Amnesty Program is not for commercial, heavy duty, farm, or heavy equipment tires.

Tires can be delivered to either South Lake Refuse & Recycling at the entrance to the Eastlake Landfill on Davis Street in Clearlake or to Lake County Waste Solutions at 230 Soda Bay Road in Lakeport.

Customers will be asked to show proof of Lake County residency and sign a form showing numbers and origin of tires. No commercial tire, auto repair or salvage businesses.

### IT'S THE LAW!

California law prohibits anyone from hauling more than 9 tires without a State permit. There may be exemptions for some cleanup projects. Contact us for information.



Paid for by a grant from CalRecycle.



## TONER CARTRIDGES

Can be mailed at no charge to recycling centers. Postage-paid envelopes available at most Post Offices.

## TOYS

Donate to thrift store or offer on Freecycle if still usable (see page 4). If made of rigid/resin plastic, see PLASTIC.

## TURPENTINE

Hazardous waste. Take to HazMobile event (see page 23).

- V -

## VCRs (Video Cassette Recorders)

See ELECTRONICS.

- W -

## WATER BOTTLES

Recyclable curbside and at recycling/drop-off centers or may be redeemed for California Redemption Value (CRV) at Buy-Back Centers. Dispose of caps in trash (See page 3).

## WEED KILLER

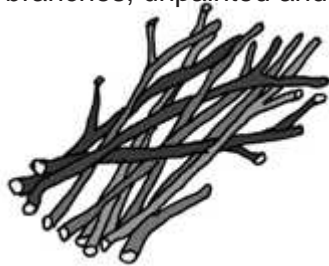
Hazardous waste. Take to HazMobile event (see page 23).

## WINDOW GLASS

NOT recyclable. Dispose of with trash.

## WOOD WASTE (Clean)

Painted or treated wood must be disposed of as refuse. DO NOT BURN. Clean wood (nails okay) Includes branches, unpainted and untreated lumber and can be recycled curbside in green waste at no additional charge with regular curbside service (see page 1) or delivered to Lake County Waste Solutions, South Lake Refuse & Recycling, or Quackenbush Resource Recovery and Compost Facility for a small fee (see page 21).



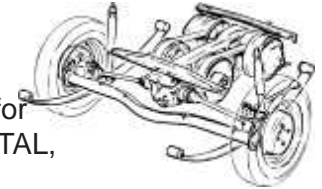
## BUTANE LIGHTERS (BIC, disposable, etc.)

Keep and take to your next HazMobile event visit (see page 23).

- C -

## CAR PARTS

Many parts are recyclable as scrap metal for buy-back, or at little or no charge (see METAL, SCRAP). All fluids must be removed and disposed of properly.



## CARDBOARD

Recyclable curbside in your blue cart or drop-off free at recycling center (see page 3). Professional moving boxes that are flattened and in good shape may be offered on Freecycle (see page 4). Dispose of waxed cardboard with refuse as it is not recyclable.

## CARPETING and CARPET PAD



Take to Lake County Waste Solutions for recycling (see inside back cover). Can be disposed of at Eastlake Landfill or in trash can. If it cannot fit in can, call for bulky item pick-up service in the unincorporated areas. Fee charged.

## CATALOGS

Recyclable curbside or drop-off at recycling center (see page 3).

## CELL PHONES

Cell phones contain toxic metals that cannot go to the landfill, so they cannot be thrown away in your trash. All cell phone stores are now required to accept used cell phones for recycling. Drop-off at recycling center (see page 3).



## CERAMICS

See CONSTRUCTION & DEMOLITION. Dispose of as refuse.

## CEREAL BOXES

Without plastic inner bag, they are recyclable curbside or drop-off at recycling center (see page 3).

## CHRISTMAS TREES

Unflocked and clean trees can be cut and placed inside your green bin curbside (lid must close). Call your hauler for special residential pickup/drop-off information (see page 1).

## CLOTHING

Donate clothes in good shape to thrift stores or offer on Freecycle (see page 4).

## COMPUTERS



Includes the CPU, keyboard, monitor, and mouse. No charge to drop-off at recycling center (see page 3) or call your hauler to schedule a "Bulky Item Pick-Up," (see page 20).

## CONCRETE

See CONSTRUCTION & DEMOLITION

## CONSTRUCTION & DEMOLITION (C&D)

If materials are in good working order, consider donating to Habitat for Humanity, offering on Freecycle or LakeMax (see page 4). Fees charged at all disposal sites listed below.

### *Eastlake Landfill*

16015 Davis St., Clearlake  
994-5888

Includes mixed C&D, non-asbestos-containing materials, non-metal pipe, flooring, dirt, asphalt, treated or painted wood, roofing, concrete. (Excess concrete will result in a recycling surcharge - or recycle at Lake County Waste Solutions and Quackenbush Mountain). Mobile homes and trailers by appointment.

### *Lake County Waste Solutions*

230 Soda Bay Rd., Lakeport  
234-6400 or 1-888-718-4888

Includes mixed or separated C&D, clean landscaping materials, asphalt shingles, tar and rock roofing, dry wall, scrap metal, concrete, brick, asphalt, and porcelain (toilets and sinks).

## SYRINGES

Hazardous waste. See SHARPS.

- T -

## TARPS

NOT recyclable. If reusable, take to thrift store or offer on Freecycle (see page 4). Otherwise, dispose of with trash.



## TELEPHONES

See ELECTRONICS.

## TELEPHONE BOOKS

Recycle curbside or at nearest recycling/drop-off center (see page 3).

## TELEVISIONS

Hazardous waste. Monitors and televisions (cathode ray tubes) are banned from landfill. Free dropoff at South Lake Refuse & Recycling or Lake County Waste Solutions (see page 3 or schedule a bulky item pick-up, page 20).

## THERMOMETERS

Save and take to your next HazMobile event visit (see page 23).

## TIRES

Banned from landfills. Drop-off at South Lake Refuse & Recycling or Lake County Waste Solutions. Small fee. (see page 3). Watch for announcements of Amnesty Programs that allow free drop-off.



## TISSUES (such as Kleenex)

NOT recyclable if used. Dispose of with trash.

## TISSUE PAPER

Recyclable curbside or at recycling/drop-off center if paper (see page 3). If foil, dispose of with trash.

*Always dispose of with trash:*

• Used tissues • Paper towels • Cotton swabs • Window glass

## PROPANE TANKS

5 gallons or smaller, accepted at HazMobile (see page 23). Tanks larger than 5 gallons can be dropped off at Lake County Gas in Lower Lake. Call 995-2840 for information.

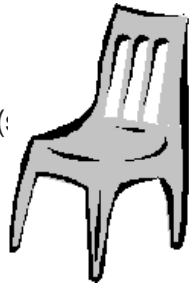
## PVC (Poly Vinyl Chloride)

NOT recyclable. Dispose of with trash. See CONSTRUCTION & DEMOLITION.

- R -

## RESIN (Plastic) CHAIRS

If reusable, take to thrift store or offer on Freecycle (: If it's broken and can fit in your trash bin, dispose of with trash. NOT recyclable.



- S -

## SHAMPOO BOTTLES

Recyclable curbside or take to recycling/drop-off center (see page 3). Rinse bottle. Dispose of lid in trash.

## SHARPS



is waste. Dispose ONLY through "Sharps-By-Mail" program available at all Lake County pharmacies for a \$5 co-pay for mail-in container.

## SHOE BOXES, Cardboard

Recycle curbside or take to recycling/drop-off center (see page 3).

## SMOKE DETECTORS

Double wrap in plastic and dispose of with trash after removing batteries. See BATTERIES.

## STRAWS

NOT recyclable. Dispose of with trash.

## STYROFOAM

Recyclable curbside only in the unincorporated areas or at recycling/drop-off centers (see page 3). Place in clear plastic bags to prevent littering.

## Granite Construction

3550 Big Valley Rd., Kelseyville  
279-1566

Clean asphalt and concrete without rebar are accepted for recycling/reuse.

## Quackenbush Mtn. Resource Recovery & Compost Facility

16520 Davis St., Clearlake  
995-0104

Includes clean construction wood, clean concrete, clean asphalt, and clean dirt.



## COPY MACHINES

See ELECTRONICS



## COUCHES

See FURNITURE

- D -

## DETERGENT CONTAINERS

Cardboard or plastic are recyclable curbside or drop-off at a recycling center (see page 3).

## DISHES/STEMWARE/CERAMICS

NOT Recyclable. If they are reusable donate to a thrift store or offer on Freecycle (see page 4). If not reusable, dispose of with trash.



- E -

## ELECTRONICS

Electronic products such as computers, printers, copy machines, fax machines, stereos, DVD players, VCRs, and answering machines are accepted at no charge at both South Lake Refuse & Recycling and Lake County Waste Solutions (see page 3). Small household appliances such as blenders, coffee makers, toaster ovens, mixers, irons, hair dryers, etc. also accepted.



## EXPLOSIVES

Make appointment to drop-off at Sheriff's Department, 262-4200.

- F -

## FIRE EXTINGUISHERS

Hazardous waste. Save and take to your next HazMobile event visit (see page 23).



## FLEA POWDER

Hazardous waste. Save and take to your next HazMobile event visit (see page 23).



## FLUORESCENT LIGHT TUBES & BULBS

(CFLs - Compact Fluorescent Lights). Hazardous waste; contains mercury. Save and take to your next HazMobile event visit (see page 23) or South Lake Refuse & Recycling (see page 21).

## FOAM

See STYROFOAM. Can also take to Lake County Waste Solution (see inside back cover). Fee charged.

## FOOD

Small quantities of fruit and vegetable scraps may be placed in greenwaste containers. No meat, dairy, or ready-made products. For information about home composting or vermicomposting (worms), visit: [www.calrecycle.ca.gov/organics](http://www.calrecycle.ca.gov/organics)

## FURNITURE

If in good condition, donate to a thrift store or offer on Freecycle (see page 4). For disposal information, see page 3 and 20).

- G -



## GASOLINE

Hazardous waste. Take to HazMobile event (see page 23).

## PET FOOD BAGS

With plastic lining, NOT recyclable, dispose of with refuse. Without plastic lining, recyclable curbside.

## PHOTOGRAPHY CHEMICALS

Hazardous waste. Deliver to HazMobile (see page 23).

## PIZZA BOXES

Not recyclable. Dispose of in trash.

## PLASTICS

**Beverage containers:** Recycle curbside or take to a buy-back/drop-off center (see page 3), Lids are not recyclable, dispose of them with trash.

**Food containers (clean):** Recycle curbside.

**Grocery bags and film plastic:** In Lakeport and Clearlake, dispose of as trash or drop-off at most grocery stores. All other areas, secure inside a clear plastic bag to reduce chance of blowing away as litter and place in blue recycle bin.

**Rigid/Hard plastics:** Clean buckets and laundry baskets can be recycled curbside in Clearlake only. Kiddie pools, crates, resin lawn chairs, storage containers, Big Wheels, etc. Drop off at Lake County Waste Solutions and South Lake Refuse & Recycling (see page 3) or place in trash.



## POISONS

Including rat, mouse, gopher, snail and slug. Hazardous waste. Take to HazMobile (see page 23).

## POLISH

Including car, furniture, nail, shoe, silver, copper, floor, etc. Hazardous waste. Take to HazMobile (see page 23). Container, if empty or if product is completely dry, can be disposed of with refuse.



## PRESCRIPTIONS

Hazardous waste. Do not dispose of in garbage, sink or toilet. Take to HazMobile (page 23). Prescription containers can be returned to most pharmacies.



## - N -

### **NAIL POLISH & POLISH REMOVER**

Hazardous waste. Save and take to your next HazMobile event visit (see page 23). If completely dried, can be disposed of with trash.

### **NURSERY POTS, Plastic**

Accepted for reuse at most nurseries or recyclable in curbside bins.

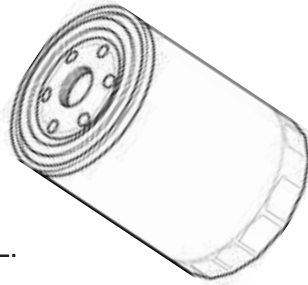
## - O -

### **OIL, USED**

See MOTOR OIL.

### **OIL FILTERS, USED**

Accepted at no charge. See MOTOR OIL.



## - P -

### **PAINT**

Take to Lake County Waste Solutions on Soda Bay Rd. or HazMobile (see page 23). If paint is latex and completely dry, container can be disposed of with refuse. Recycled paint is available on a first-come-first-served basis at Lake County Waste Solutions on Soda Bay Rd.

### **PALLETS**

See WOOD WASTE.



### **PAPER**

Includes cardboard, newspaper, junk mail, magazines, office paper, etc.) Recycle curbside or at recycling centers, (see page 3)

### **PESTICIDES**

Hazardous waste. Save and take to your next HazMobile event visit (see page 23).

### **GIFTWRAP**

Recyclable except for foil wrap, which must be disposed of with trash.



### **GLASS**

Beverage containers marked CRV or California Redemption Value can be redeemed for money at Buy-Back Centers, placed in curbside bin (remove lids), or dropped off at a recycling center (see page 3). Food jars and bottles (spaghetti sauce, catsup, etc.) may be placed in curbside bins (without lids). Window glass is not recyclable and can be disposed of as trash.

### **GLASSWARE**

See DISHES. If reusable, donate to thrift store or offer on Freecycle (see page 4). NOT recyclable. Dispose of with trash.

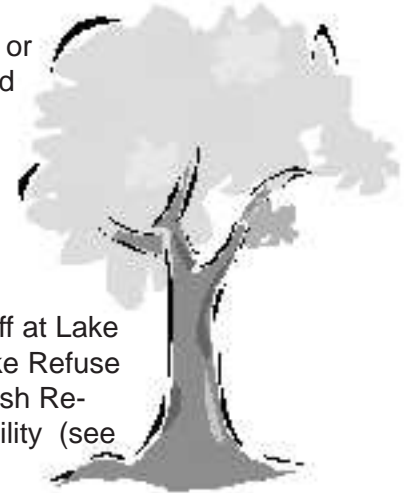
### **GREEN WASTE**

No poison oak, berry vines, cactus, or palm fronds - they must be disposed of as garbage or taken to landfill.

Yard trimmings and fruit and vegetable scraps can be placed in green curbside bin. For information on home composting, visit:

[www.calrecycle.ca.gov/organics/#](http://www.calrecycle.ca.gov/organics/#)

Greenwaste can also be dropped off at Lake County Waste Solutions, South Lake Refuse & Recycling Center, or Quackenbush Resource Recovery and Compost Facility (see page 21). Fee charged.



## - H -

### **HAIR DYE**

Hazardous waste. Save and take to your next HazMobile event visit (see page 23). If completely dried, can be disposed of with trash.

### **HERBICIDES**

Hazardous waste. Save and take to your next HazMobile event visit (see page 23).

## HOSES

NOT recyclable. If reusable, take to thrift store. Otherwise dispose of with refuse.

- I -

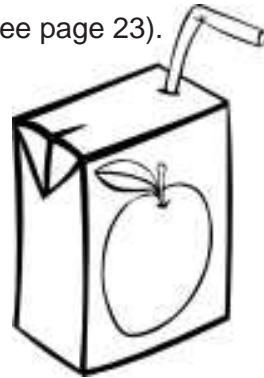
## INSECTICIDES

Hazardous waste. Take to HazMobile event (see page 23).

- J -

## JUICE BOXES

Juice, soy milk, etc. boxes can be rinsed and recycled curbside or at a recycling/drop-off center (see page 3).



- K -

## KEROSENE

Hazardous waste. Take to HazMobile event (see page 23).

- L -



## LAWNMOWERS

Deliver to Recycling/Drop-off Center (see page 3) with fluids drained and properly disposed of at a HazMobile event. Recyclable as scrap metal at no charge.

- M -

## MAGAZINES

Recycle curbside or at a recycling/drop-off center (see page 3).

## MATTRESSES

Deliver to Eastlake Landfill or Lake County Waste Solutions for a \$5 fee, (call ahead for large quantities) or schedule a bulky item pick-up (see page 20).

## MEDICAL SUPPLIES and EQUIPMENT

If equipment is reusable, donate to thrift store or offer on Freecycle (see page 4). Syringes (see SHARPS) cannot be disposed of in trash. Also see PRESCRIPTIONS.



## METAL CANS

Including food (soup, tuna, pet food, etc.) are recyclable curbside or at a recycling/drop-off center (see page 3).

## METAL (SCRAP)

Some non-ferrous scrap metal is eligible for buy-back. Other metal such as bed frames, shelving, car parts (fluids drained), bike frames, tools, wood stoves, hardware, chain link fencing, galvanized pipe, iron pots and pans, etc. can be dropped-off at South Lake Refuse & Recycling or Lake County Waste Solutions (see page 3). No charge for up to 4 1/2 cubic yards per month (one pickup truck load). *NOTE:* Iron or steel cable, chain or barbed wire must be disposed of. Propane tanks larger than 5 gallons are accepted at Lake County Gas in Lower Lake. Call 995-2840 for information.

## MILK CARTONS

Rinse and recycle curbside or at a drop-off center (see page 3).

## MIRRORS

NOT recyclable. If reusable, donate to a thrift store or offer on Freecycle (see page 4). Otherwise dispose of with trash.

## MOTH BALLS & FLAKES

Hazardous waste. Save and take to your next HazMobile event visit (see page 23).



## MOTOR OIL, USED and NEW

No charge. Redemption value may be available at some locations if oil is uncontaminated. Oil filters accepted. Deliver up to 5 gallons per day. See page 24 for drop-off locations and information.